

ZADCO NEWS

ISSUE 8



OLIVES

PROFITING FROM EVERY DROP



YOUR SOIL, YOUR PLANT AND YOU.

Unfortunately, a lot has been said recently about balanced nutrition, but little is done to achieve it. Balanced nutrition can only be achieved when all nutrients are looked at simultaneously. The old methods of interpreting analytical data regard one mineral at a time and this is unable to take interactions and lock-ups into account.

DO YOU HAVE:- POOR ORGANIC MATTER, POOR C.E.C, ACIDIC/ALKALINE SOIL, NUTRIENT LOCK-UP OR INTERACTIONS?

Unfortunately, a perfect soil does not exist!!
So what do you do?

USE MOBILIZER!!

It reduces the precipitation of Phosphorus, mobilises Calcium, Potassium, Magnesium and Trace elements.

It increases the availability of Macro and Micro nutrients to the plant by increasing the permeability of the root cell membrane.

It can be used as a foliar spray and increases the Chlorophyll content of the leaves, hence better leaf colour.

It is a buffer and **can be used on all soils**, regardless of the pH. It is known to aid in leaching Sodium out of the soil.

It is totally organic and environmentally friendly.

The most pronounced effects of **Mobilizer** are obtained when using it in **early season soil treatments** followed with **post emergence foliar sprays**. (Ask supplier for recommended rates of use)

This product has shown outstanding results in all field trials and is a must for growers to optimise soil and plant productivity. **Apply it now and all throughout the growing season for the best results. Many growers swear by it!!!**

COMPLETE FERTILISERS..... WHAT IS THE BEST?

Excessive salt is of increasing concern in Australia. High levels of Sodium and/or Chloride can cause these elements to accumulate within the tree and ultimately cause toxic reactions. Cases have been reported whereby fruit drop has occurred due to high levels of Sodium or Chlorine in the tissues. Chloride toxicity sometimes occurs after fertilisers containing chloride are applied to poorly drained soils.

The most important side effects of salinity in an olive orchard are reduced shoot and root growth, and ultimately, lower fat content in fruit. All these can occur even without the appearance of leaf symptoms.

Many growers have converted to using **FERTILE** which is **free from Sodium and Chlorides**.

FERTILE is a **TOTALLY SOLUBLE COMPLETE FERTILISER** specially formulated to give young and established crops a strong start. It is ideal for use in all fertigation systems.

FERTILE is ideal for use on older trees if they lack vigour, flowering, and fruit set.

FERTILE is ideal for post harvest applications to build enough nutrient reserve into trees for next year's crop.

FERTILE has high amounts of soluble Phosphorous and Potassium which makes it ideal if used in periods of stress (cold and hot weather).

The rates of application for **FERTILE** will vary according to the initial soil nutrient status.

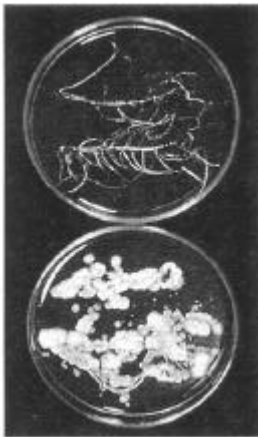
THE OLIVE ROOT SYSTEM:- HOW DO WE PROTECT IT?

Until a problem affecting roots becomes severe enough to limit shoot growth or production, the underground part of the tree is often taken for granted.

In woody perennial plants, beneficial soil fungi can have a positive effect on growth. Over fertilisation, cultivation, poor organic matter and wet or dry soils often reduce the numbers of beneficial organisms in the soil. They have been known to aid root uptake of nutrients for many plants.

Good Fruit and Vegetables (January issue) mentions the effective use of *Trichoderma spp* as beneficial soil inoculants as well as a feasible method of biological control.

Tri-D25 is a beneficial soil inoculant, with two strains of *Trichoderma spp*. (*Trichoderma koningii* and *Trichoderma harzianum*.)



TRI-D25 is totally safe to humans, animals and plants, and has root competence and fungicide resistance. **TRI-D25** fungi live, multiply, and will sharply increase beneficial microbial population around root zone.

TRI-D25 is a naturally occurring saprophytic soil fungus, it has antagonistic and growth inhibitory properties towards a wide spectrum of soil borne pathogens.

TRACE ELEMENT REQUIREMENTS- Boron

Many trace elements, particularly Boron, play critical roles in the physiology of the olive plant. Boron deficiency deserves special mention because research has shown that olives are sensitive to boron deficiencies. Symptoms of boron deficiency produces short branches with small pale green leaves having scorched tips and

considerable leaf drop. The bark may be thick and corky with blistering; and there may even be limb dieback.

In fruit, Boron deficiencies may show a 'monkey face' deformity, that is if fruiting occurs at all. The application of Boron alone may and will interfere with the uptake of other elements as well as the usage of these elements by the tree.

An ideal method of application of trace elements throughout the growing season is through the use of **BIOMIN BOOSTER V** which is a complete trace element mix. This will ensure that trace element levels remain balanced and maintained throughout the season. A balanced tree is a healthy tree.

BIOMIN BOOSTER V, and **BIOMIN BORON** are plant minerals chelated mainly by Glycine and other natural organic acids which are highly bio-available. An important feature is that they are **WAX SOLUBLE** which means they will enter the leaves at any stage of growth. This enables growers to use these products when a deficiency appears, and as a result, yields do not have to be sacrificed. The BIOMINS are highly systemic, and can be used to prevent deficiencies from occurring in the first place.

For growers requiring extra boron, **BIOMIN BORON (15%)** can be added to Biomin Booster V in order to boost Boron levels (where necessary). The **BIOMIN BORON (15%)** aids in increasing yields, aids in preventing deformation 'monkey face' in fruit, improves fruit shape and increases quality.

PROBLEMS WITH DISEASES, OR NEED ADVICE ON NUTRIENT PROGRAMS, PLEASE ASK US! *

Zadco for Quality Gro Pty. Ltd.

9/9A Foundry Road
Seven Hills N.S.W 2147
Australia.

Ph: +62 2 9838 9111

Fax: +62 2 9838 9110

Email: inquiries@zadco.com.au

Website: <http://www.zadco.com.au>